

**Conservation Projects Completed  
Funded by  
State, Federal and Private Grant Programs  
2007- 2021**

Both individually and representing various entities, Janet Morrison developed, managed, and completed the following conservation projects, funded by grant programs administered by the Massachusetts Executive Office of Energy and Environmental Affairs (EOEEA), based on successful grant applications she wrote:

\*NOTE: The conservation of some properties was funded by more than one grant program.

KEY: Conservation Restriction      CR      “What is a Conservation Restriction?”(link to pdf)

**Massachusetts Grant Programs**

**LAND grant program** (Local Acquisitions for Natural Diversity):

• <i>Jewell Hill Conservation Project, Ashburnham CR</i>	86 Acres	2020	Map 5 #H
• <i>Jewell Hill Conservation Project, Fitchburg CR</i>	137 Acres	2020	Map 5 #I
• <i>Western Wildlife Corridor, Morse Property, Shirley</i>	52 Acres	2020	Map 6
• <i>Bailey Brook Conservation Area, Gardner*</i>	84 Acres	2018	Map 4 #B
• <i>Whitmanville Farm CR, Westminster*</i>	426 Acres	2009	Map 2
• <i>Howard Road Conservation Area, Westminster</i>	61 Acres	2008	Map 1

**DWSP grant program** (Drinking Water Supply Protection):

• <i>Jewell Hill Conservation Project, Ashby CR</i>	70 Acres	2020	Map 5 #G
• <i>Crocker Road Watershed Protection Project, Porter Property, Ashby</i>	20 Acres	2020	Map 5 #F
• <i>Northern Watershed Project, Crocker CR, Ashby</i>	29 Acres	2018	Map 5 #D
• <i>Northern Watershed Project, Krapf Property, Ashby</i>	25 Acres	2018	Map 5 #E
• <i>Fitchburg Northern Watershed, Kirby Property &amp; CR, Ashby &amp; Ashburnham</i>	153 Acres	2014	Map 5 #C
• <i>Cummings Otter River Conservation Area, Gardner*</i>	140 Acres	2012	Map 3
• <i>Fitchburg Reservoir Project, Crocker CR, Ashby and Ashburnham</i>	113 Acres	2009	Map 5 #A
• <i>Fitchburg Reservoir Project, Rice CR, Ashburnham</i>	50 Acres	2009	Map 5 #B

**Conservation Land Tax Credit Program (CLTC)**

This program provides a tax credit to donors of land or conservation restrictions, equal to 50% of appraised value, up to a maximum tax credit of \$75,000.

• <i>Rota &amp; Smith CR's, Lancaster</i>	12 Acres	2020	Map 10
• <i>Dimmick Property, Hubbardston</i>	60 Acres	2020	Map 7 #C
• <i>Howland Conservation Restriction, Ashburnham</i>	27 Acres	2020	Map 8
• <i>Bailey Brook Conservation Area, Gardner*</i>	84 Acres	2018	Map 4 #B
• <i>Chernoch Conservation Restriction, Westminster*</i>	20 Acres	2018	Map 9 #C
• <i>Sharron Property, Hubbardston</i>	49 Acres	2016	Map 7 #B
• <i>Zins Conservation Area, Princeton</i>	7 Acres	2014	Map 9 #G

**Landscape Partnership Grant Program:**

Janet led this project, in a partnership that included Mount Grace Land Conservation Trust, Mass. Department of Fish and Game (DFG) and two municipalities. Janet wrote a successful grant application for the project, and represented two municipal Conservation Commissions in the conservation of the following properties:

- Gardner and Winchendon Landscape Connection Project
- Alisauskas Conservation Area, Gardner\* 224 Acres 2017 Map 4 #A
- Nineteenth Hill Wildlife Management Area, Winchendon (4 properties acquired by Mass. DFG ) 294 Acres 2017 Map 4 #C #1-4
- Town Forest, Winchendon\* 72 Acres 2017 Map 4 #D

### Conservation Partnership Grant Program

Working in a volunteer capacity as Chair of the Fitchburg Greenway Committee and representing North County Land Trust, Janet wrote a successful grant application to fund the acquisition of a 7-acres addition to Gateway Park.

- Gateway Park Knoll, Fitchburg 7 Acres 2011 Map 11

### APR Program (Agricultural Preservation Restriction):

Working with the APR Program, the Westminster Open Space Committee and a local farmer, Janet facilitated the conservation a 47-acre farm with prime agricultural soils.

- Maple Heights Farm, Westminster 47 Acres 2007 Map 1

### Federal Grant Programs

#### Forest Legacy Program

Representing a project partner, Janet developed, managed, and completed conservation of the following properties, funded by federal Forest Legacy Program grants to two projects:

#### Quabbin Reservoir to Wachusett Mountain Forest Legacy Project:

##### Westminster:

- Wildes Property 15 Acres 2019 Map 9 #A
- Nakrosis Conservation Restriction 47 Acres 2019 Map 9 #D
- Wright Property 13 Acres 2018 Map 9 #B
- Chernoch Conservation Restriction\* 20 Acres 2018 Map 9 #C
- Lane Conservation Restriction 102 Acres 2018 Map 9 #E

##### Princeton:

- Krashes Conservation Restriction 31 Acres 2017 Map 9 #F
- Zins Conservation Restriction 7 Acres 2014 Map 9 #G

##### Hubbardston:

- Underwood Road CA Conservation Restriction 65 Acres 2015 Map 7 #A

#### Southern Monadnock Plateau Forest Legacy Project, Ashby, Fitchburg, Gardner & Westminster

##### Gardner

- Cummings Otter River Conservation Area\* 140 Acres 2012 Map 3

##### Westminster

- Whitmanville Farm Conservation Restriction\* 426 Acres 2009 Map 2

##### Ashby & Fitchburg

- Continental Advisors Property 51 Acres 2010 Map 5 #I

○

##### Fitchburg

- Donelan Property 23 Acres 2012 Map 5 #L
- Perna Property 20 Acres 2010 Map 5 #J
- Kulkulla Property 27 Acres 2010 Map 5 #K

## North American Wetlands Conservation Act (NAWCA) Small Grants Program

Both individually and representing various entities, Janet developed, managed, and completed conservation of the following properties, funded by the federal NAWCA Small Grants Program, which awarded a grant to Janet Morrison for the following conservation project:

### ***Gardner and Winchendon Wetlands Protection Project***

• <i>Alisaukas Conservation Area, Gardner*</i>	224 Acres	2017	Map 4 #A
• <i>Bailey Brook Conservation Area, Gardner*</i>	84 Acres	2018	Map 4 #B
• <i>Town Forest, Winchendon*</i>	72 Acres	2017	Map 4 #D
• <i>Cowee Property, Gardner</i>	80 Acres	2019	Map 4 #E
• <i>Gardner Fish &amp; Gun Club Property, Gardner</i>	.5Acres	2019	Map 4 #F
• <i>Gardner Fish &amp; Gun Club Conservation Restriction, Gardner</i>	20 Acres	2020	Map 4 #F1

## **Grants Awarded for Conservation, Trails and Stewardship**

Janet wrote successful grant applications to the following grant programs for these projects:

### **Recreational Trails Grant Program:**

The Massachusetts RTP awards grants to municipalities, and non-profit organizations and groups, for the construction of public access trails and trail related projects.

- *Rollstone Hill Trails Project, Fitchburg*

### **Natural Resources Conservation Service (NRCS)**

The federal EQUIP grant program provides funding for land stewardship projects.

- *Crocker Conservation Area Forest Improvement Project, Fitchburg*
- *Rome Conservation Area Forestry Project, Gardner*

## **Community Foundations**

### **Community Foundation of North Central Mass.**

- *Proposal for Farmland Inventory Project, 14 communities*
- *Rollstone Hill Trails Project, Fitchburg (4 grants awarded)*

### **Greater Worcester Community Foundation.**

- *Land Steward*

## **Private Foundations**

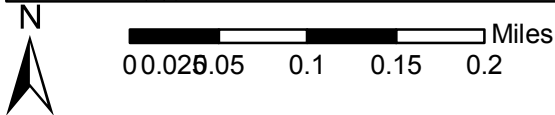
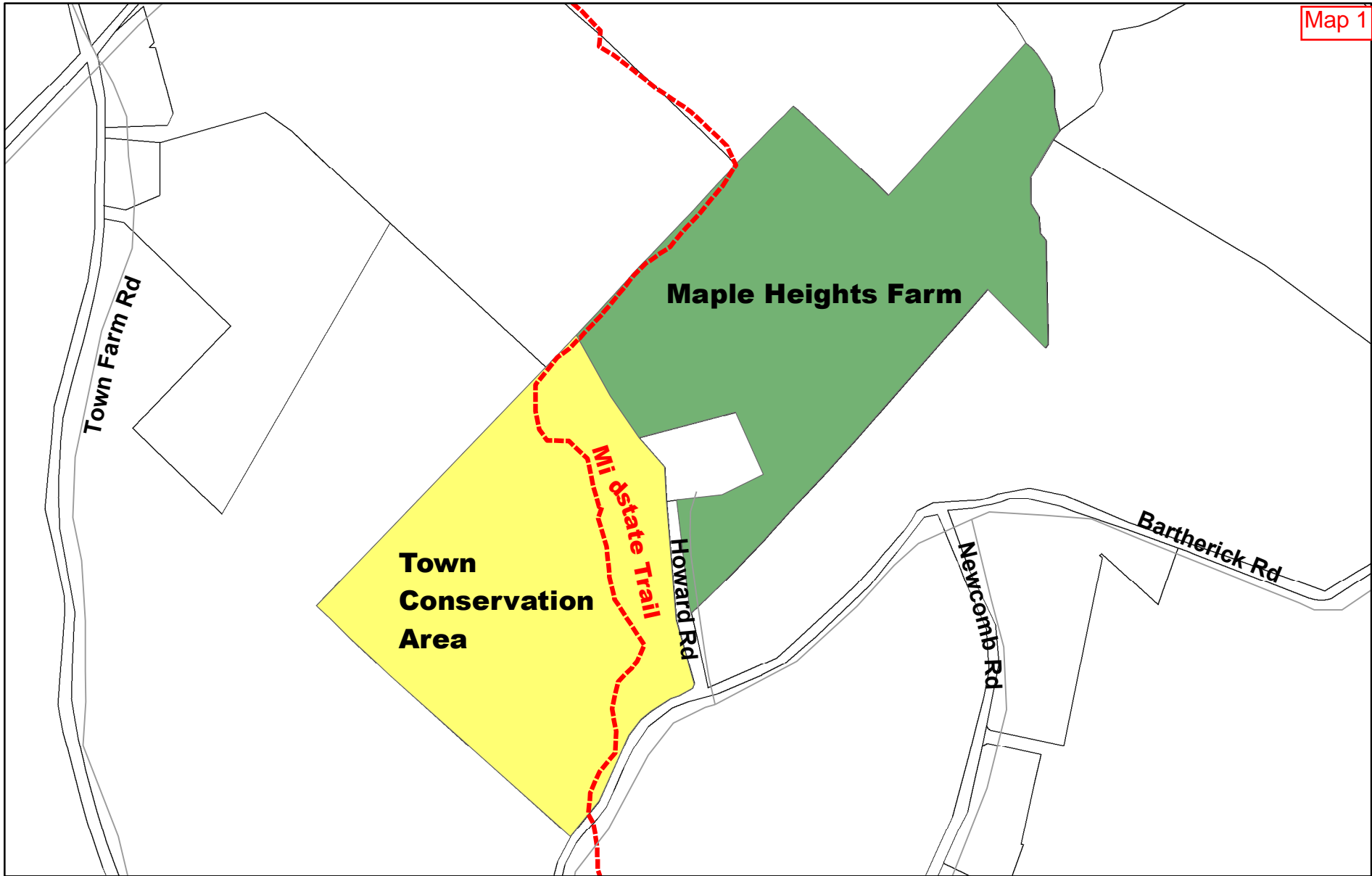
### **Fields Pond Foundation**

- *Gardner and Winchendon Landscape Connection Project*
- *N-S-N Wild & Scenic Rivers, Forest Legacy Project*

## **Conservation Initiatives**

### **Quabbin to Cardigan Initiative**

- *Quabbin to Wachusett Forest Legacy Project*
- *Gardner and Winchendon Landscape Connection Project*

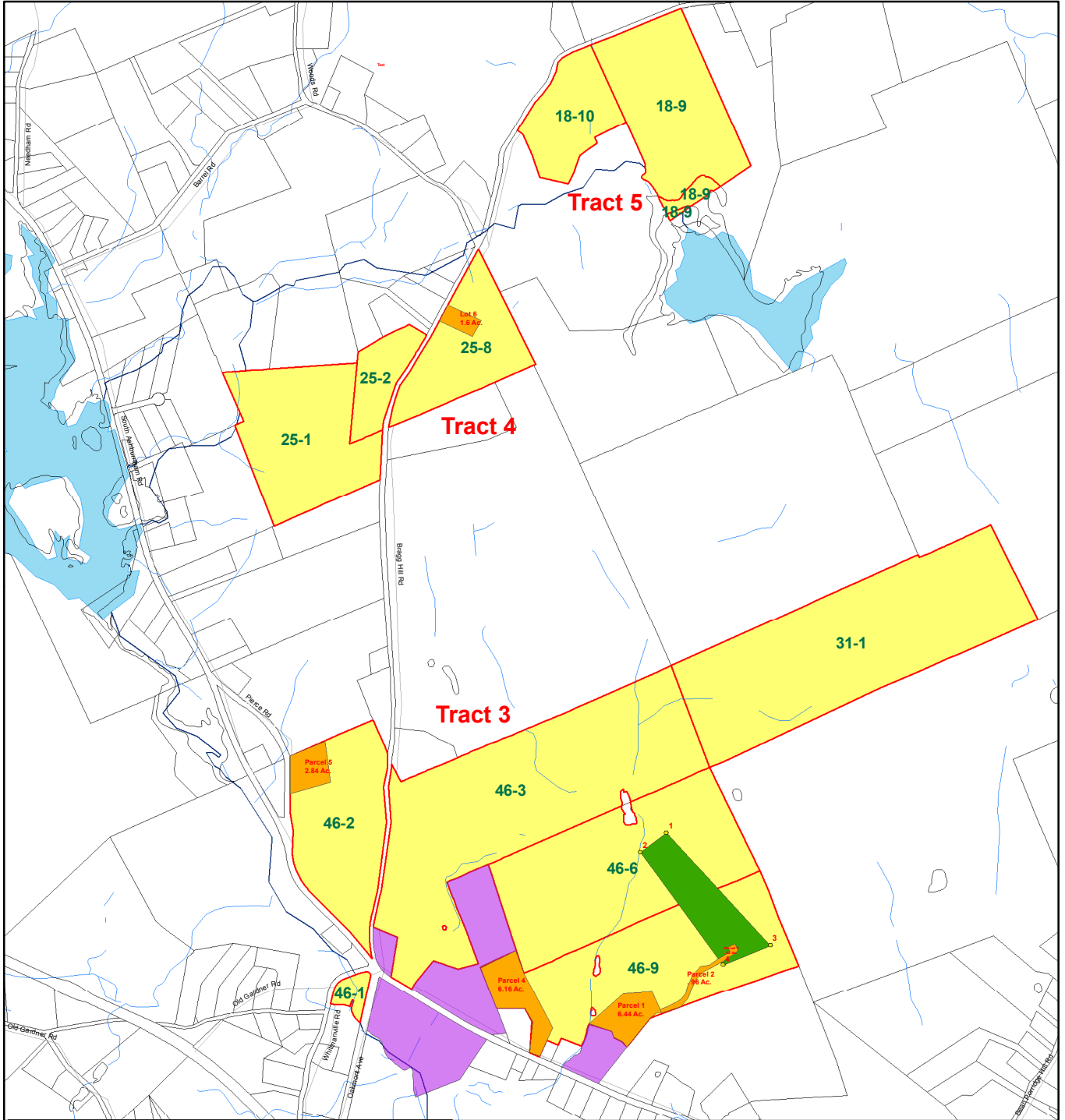


**Maple Heights Farm &  
Town Conservation Area  
Westminister, Mass.**

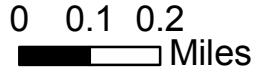


# Jarvenpaa Land in SMP Forest Legacy Project Tracts 3, 4 & 5 and Parcel Exclusions

Map 2

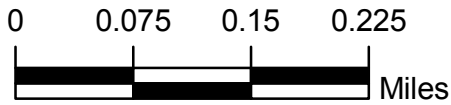
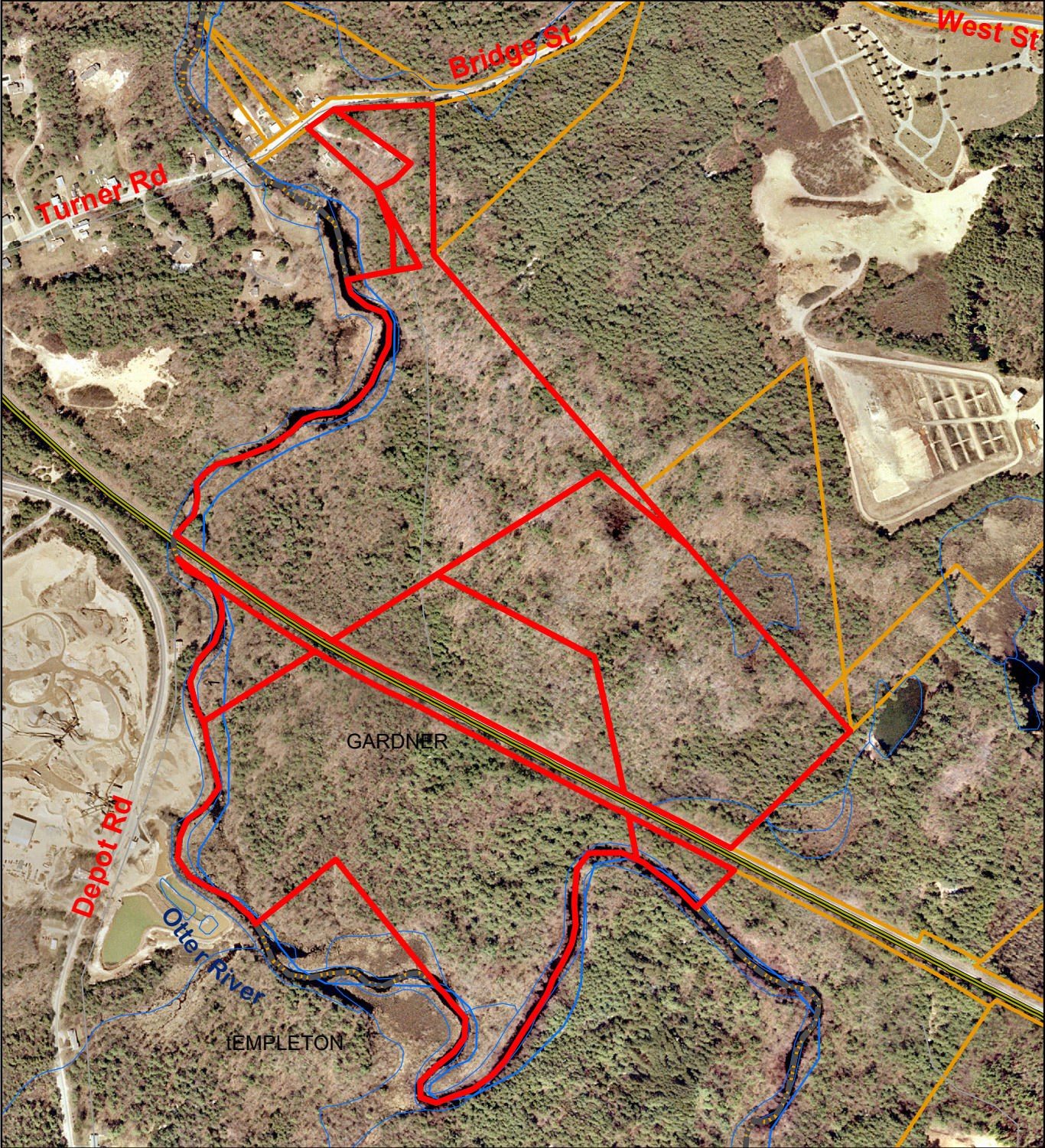


- Renewable Energy Area
- Excluded Parcels
- Land in Forest Legacy CR
- Jarvenpaa land not in CR





# Cummings Otter River CA, Gardner








# MAP 5

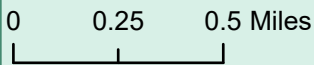
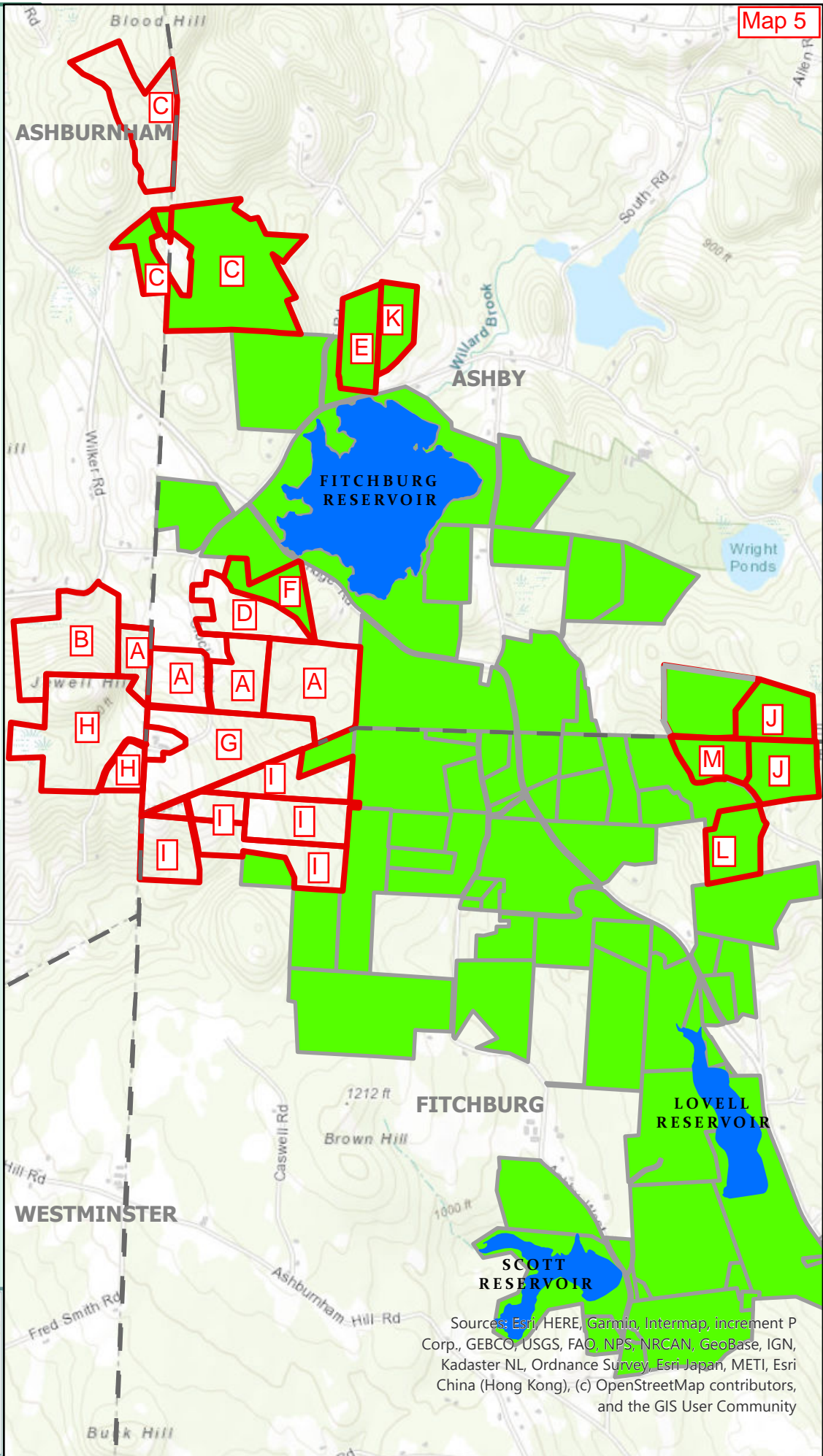
## FITCHBURG'S NORTHERN WATERSHED

Protecting Fitchburg's Drinking Water

### FITCHBURG WATERSHED LAND

-  CITY-OWNED
-  CONSERVATION RESTRICTIONS 2009 - 2021
-  CITY-OWNED CONSERVED 2009 - 2020

TOTAL CONSERVED 800 ACRES



**Janet H. Morrison, Esq.**  
**Land Conservation Consulting**  
 59 Kelton Road, Ashburnham, MA 01430  
 978 827-5600; Cell: 978 502-0704  
[janet-morrison@comcast.net](mailto:janet-morrison@comcast.net)  
[JHMORRISON.COM](http://JHMORRISON.COM)

Source Credit: MassGIS

Sources: Esri, HERE, Garmin, Intermap, increment P Corp., GEBCO, USGS, FAO, NPS, NRCAN, GeoBase, IGN, Kadaster NL, Ordnance Survey, Esri Japan, METI, Esri China (Hong Kong), (c) OpenStreetMap contributors, and the GIS User Community



# Town of Shirley Western Wildlife Corridor

## Morse Property

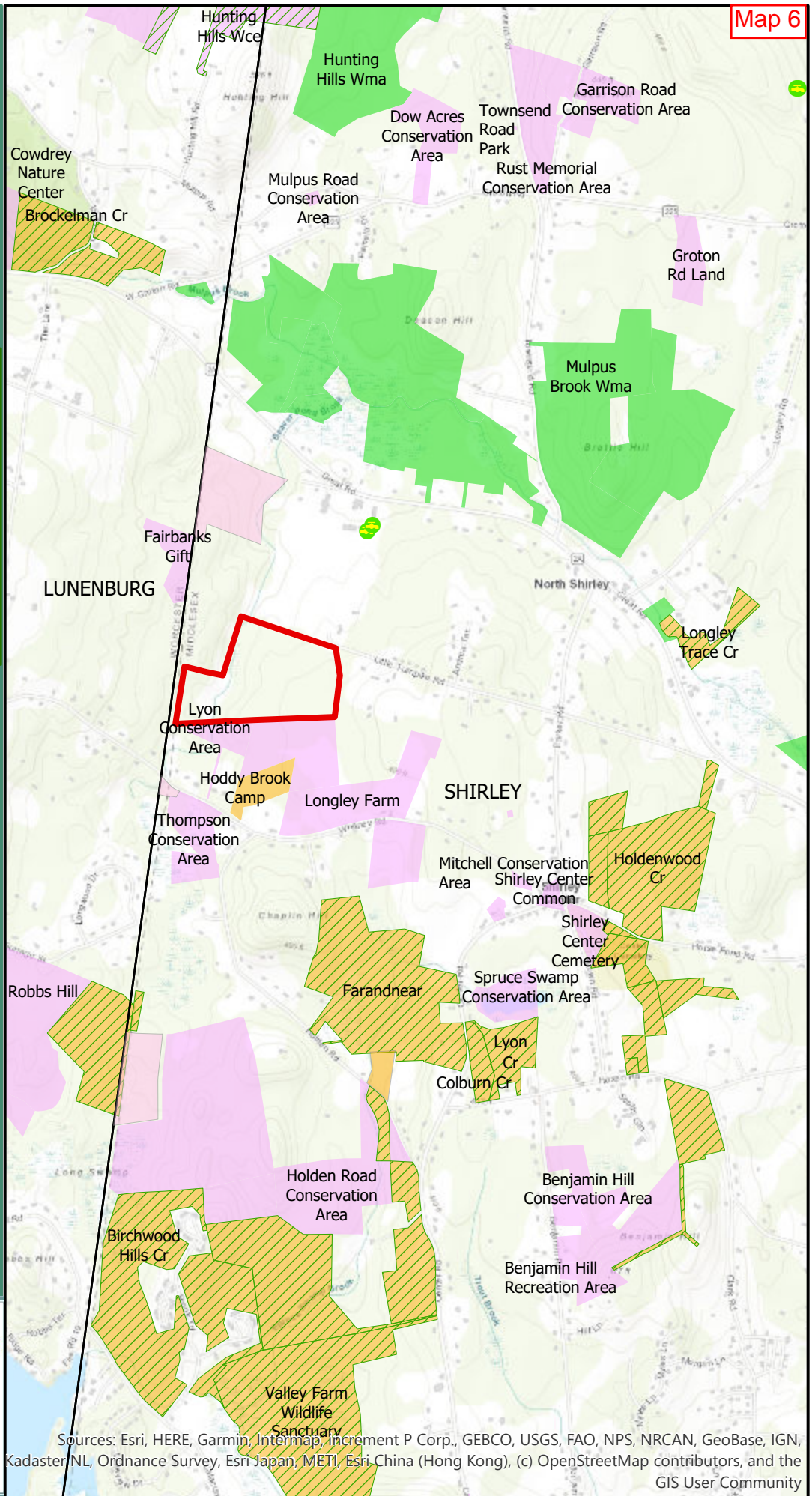


## OpenSpace: Lands

- Depart. Fish & Game
- Municipal
- Private

## OpenSpace: Interest Overlay

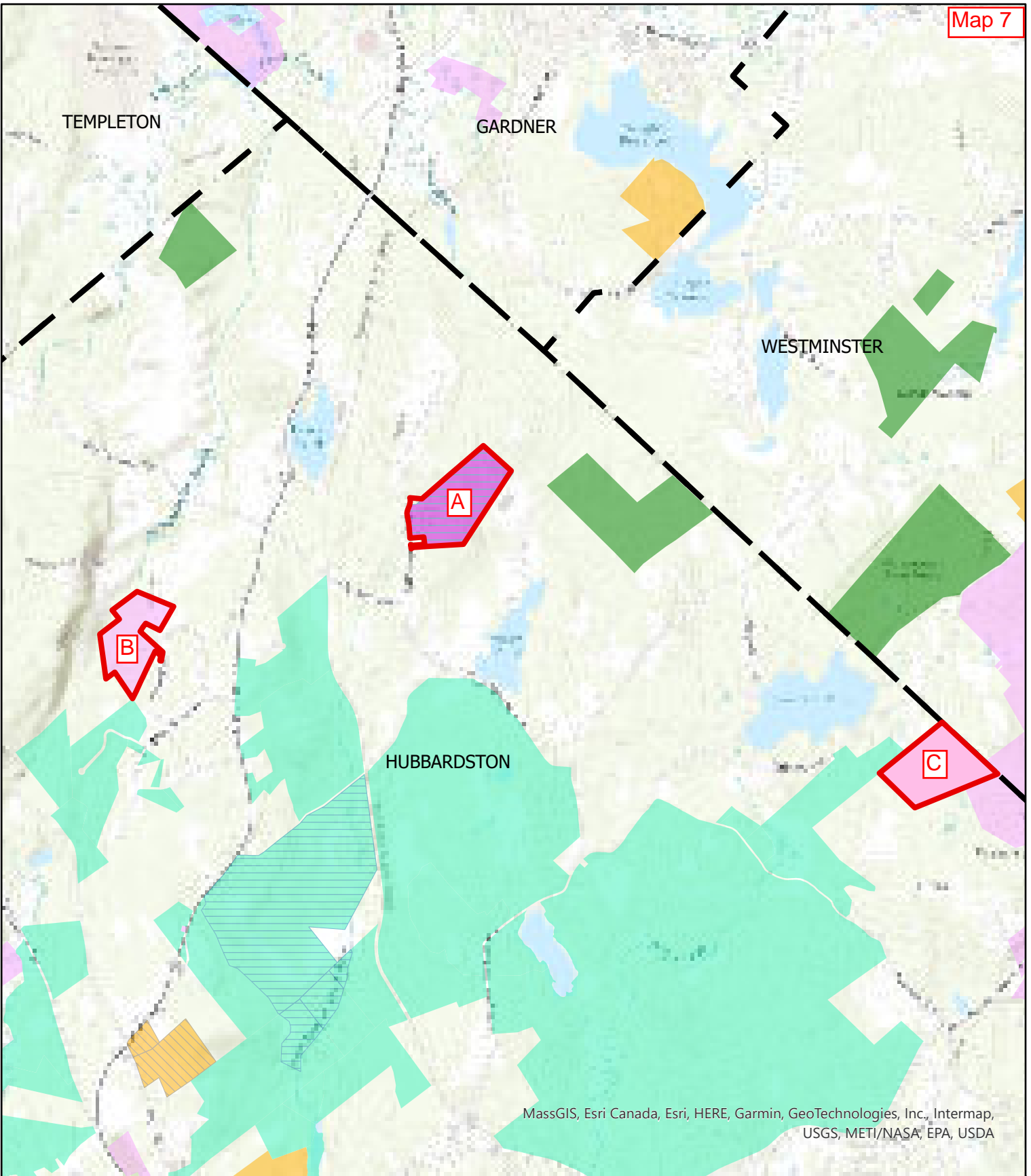
- Conservation Restriction



**Janet H. Morrison, Esq.**  
**Land Conservation Consulting**  
 59 Kelton Road, Ashburnham, MA 01430  
 978 827-5600; Cell: 978 502-0704  
[janet-morrison@comcast.net](mailto:janet-morrison@comcast.net)  
[JHMORRISON.COM](http://JHMORRISON.COM)

Source Credit: MassGIS

Sources: Esri, HERE, Garmin, Intermap, increment P Corp., GEBCO, USGS, FAO, NPS, NRCAN, GeoBase, IGN, Kadaster NL, Ordnance Survey, Esri Japan, METI, Esri China (Hong Kong), (c) OpenStreetMap contributors, and the GIS User Community



**Janet H. Morrison, Esq.**  
**Land Conservation Consulting**

59 Kelton Road, Ashburnham, MA 01430  
 978 827-5600; Cell: 978 502-0704  
[janet-morrison@comcast.net](mailto:janet-morrison@comcast.net)  
[JHMORRISON.COM](http://JHMORRISON.COM)

Source Credit: MassGIS

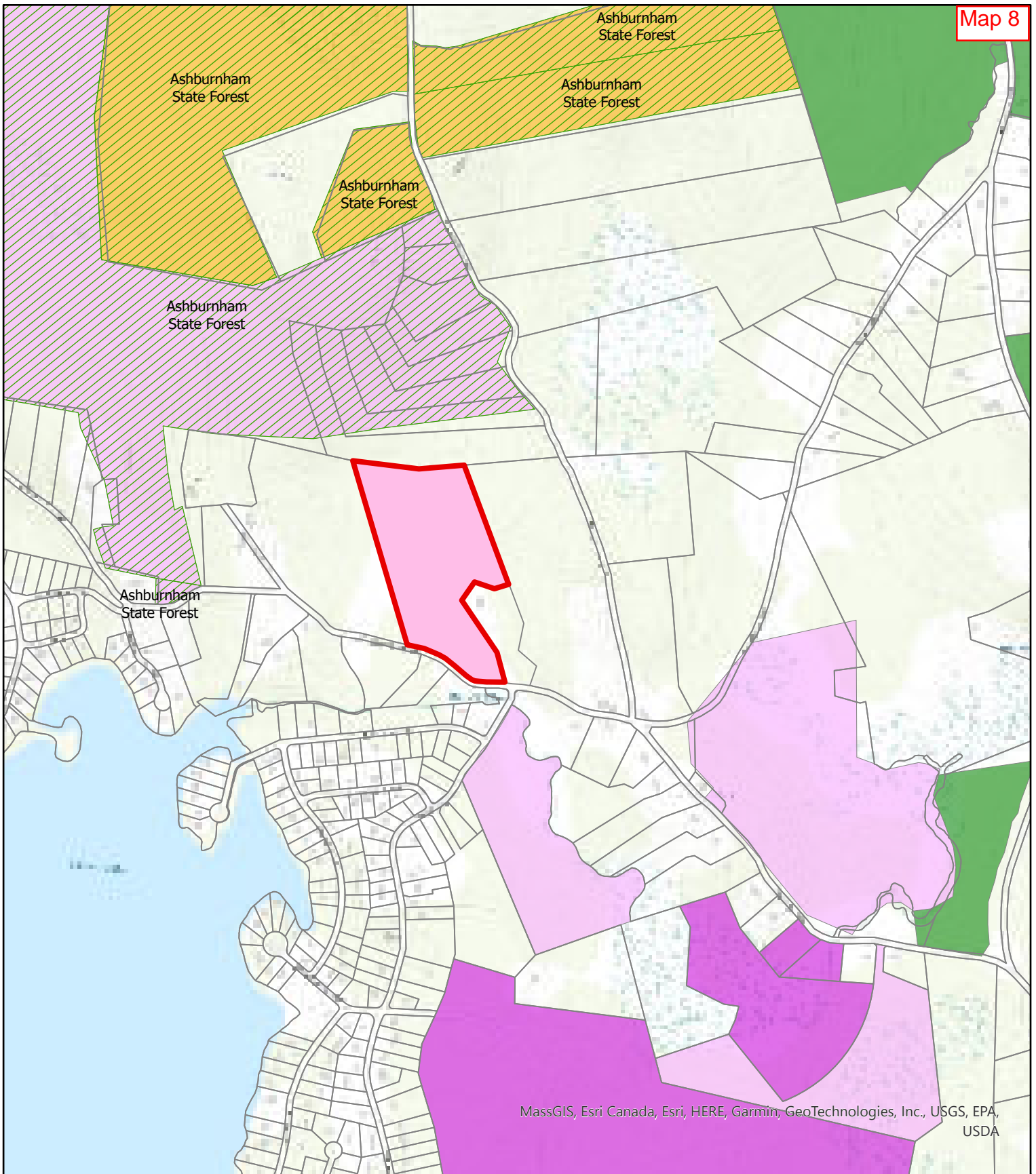
**Map 7**  
**Conserved Land**  
**Hubbardston, MA**

**Protected OpenSpace**

- DCR-State Parks & Recreation
- DCR-Water Supply Protection
- Municipal
- Land Trust
- Conservation Restriction

0 0.25 0.5 Miles





**Janet H. Morrison, Esq.**  
**Land Conservation Consulting**

59 Kelton Road, Ashburnham, MA 01430  
 978 827-5600; Cell: 978 502-0704  
[janet-morrison@comcast.net](mailto:janet-morrison@comcast.net)  
[JHMORRISON.COM](http://JHMORRISON.COM)

Source Credit: MassGIS

**Howland Property  
 Ashburnham**



**Conserved Open Space**

-  DCR-State Parks & Recreation
-  Municipal
-  Land Trust
-  Private
-  Conservation Restriction

0 0.05 0.1 0.2 Miles





# FITCHBURG SOUTHERN WATERSHED

Quabbin Reservoir to Wachusett Mountain Forest Legacy Project (Q2W)

## PROPERTIES CONSERVED

- FEE SALE
- CONSERVATION RESTRICTION

## OPENSOURCE: LANDS

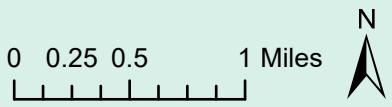
- MUNICIPAL
- DCR-STATE PARKS & RECREATION
- LAND TRUST
- DCR-WATER SUPPLY PROTECTION
- PRIVATE

## SURFACE WATER PROTECTION AREAS

- ZONE A
- ZONE C
- SUB-WATERSHEDS

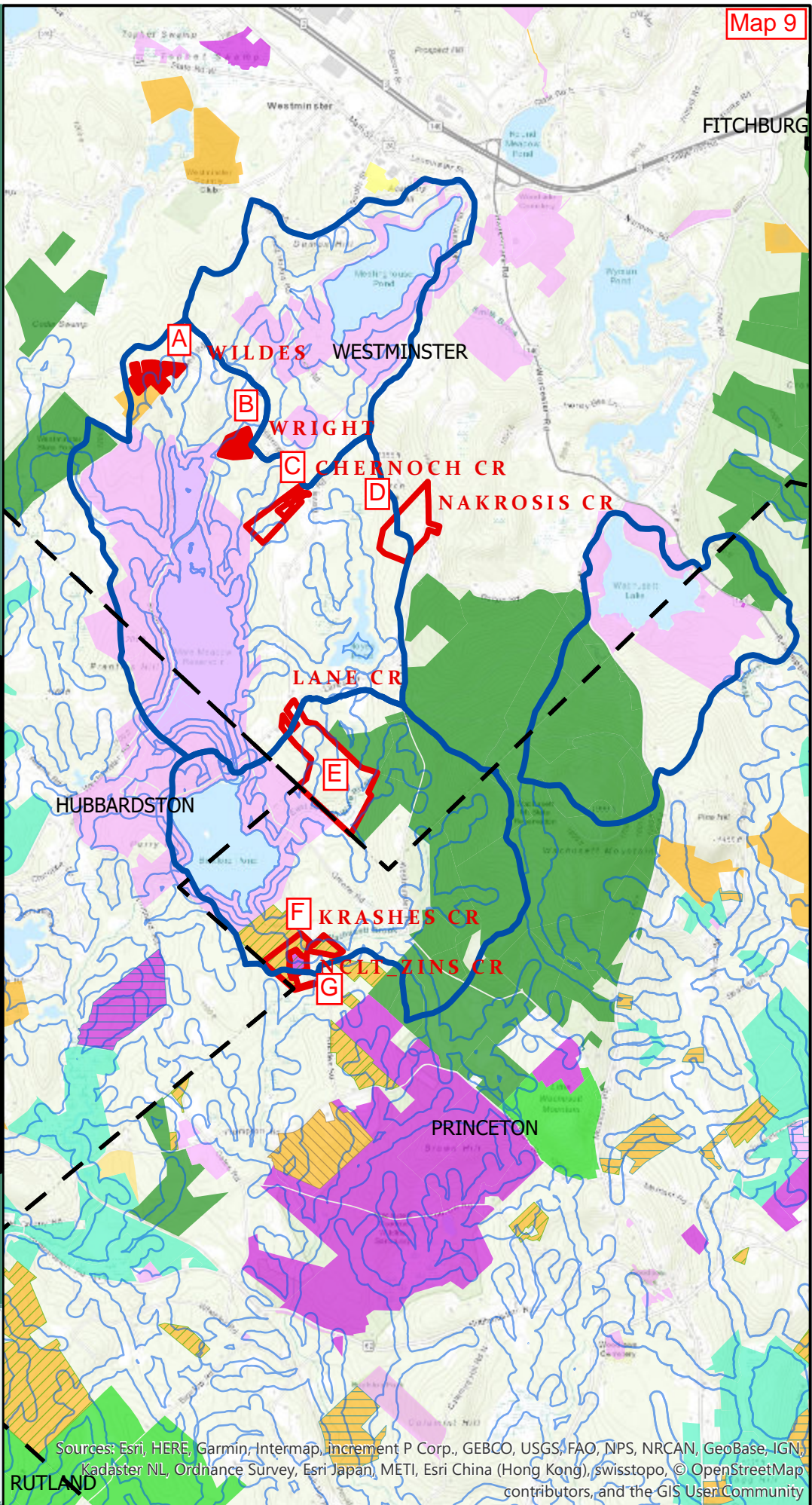
## PROPERTY ACRES

WILDES	15.4
WRIGHT	13.4
CHERNOCH CR	20
NAKROSIS CR	46.9
LANE CR	109
KRASHES CR	34.2
NCLT_ZINS CR	7.4
<b>TOTAL</b>	<b>246.3</b>



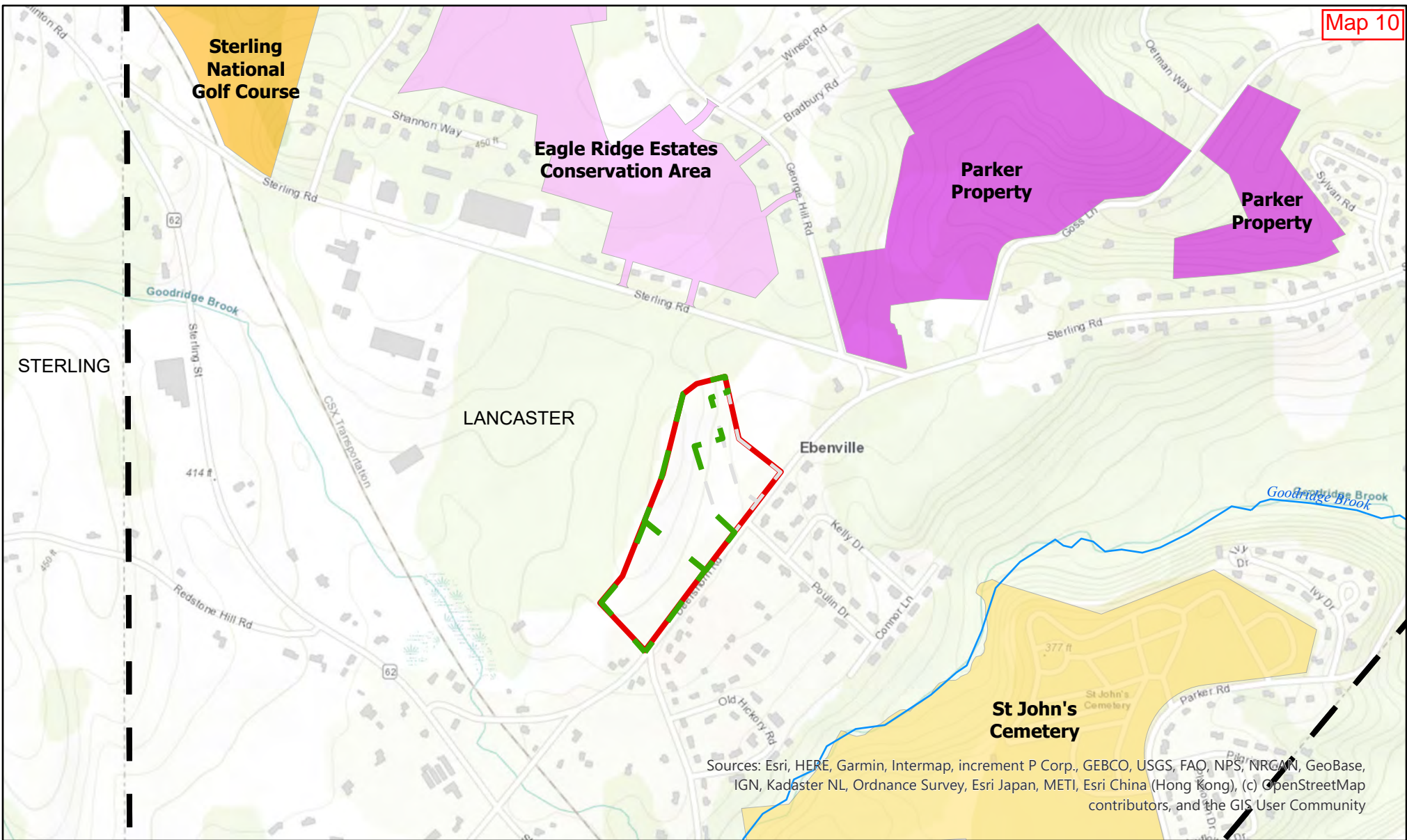
**Janet H. Morrison, Esq.**  
**Land Conservation Consulting**  
 59 Kelton Road, Ashburnham, MA 01430  
 978 827-5600; Cell: 978 502-0704  
[janet-morrison@comcast.net](mailto:janet-morrison@comcast.net)  
[JHMORRISON.COM](http://JHMORRISON.COM)

Source Credit: MassGIS



Sources: Esri, HERE, Garmin, Intermap, increment P Corp., GEBCO, USGS, FAO, NPS, NRCAN, GeoBase, IGN, Kadaster NL, Ordnance Survey, Esri Japan, METI, Esri China (Hong Kong), swisstopo, © OpenStreetMap contributors, and the GIS User Community





Sources: Esri, HERE, Garmin, Intermap, increment P Corp., GEBCO, USGS, FAO, NPS, NRCAN, GeoBase, IGN, Kadaster NL, Ordnance Survey, Esri Japan, METI, Esri China (Hong Kong), (c) OpenStreetMap contributors, and the GIS User Community




**Janet H. Morrison, Esq.**  
**Land Conservation Consulting**

59 Kelton Road, Ashburnham, MA 01430  
 978 827-5600; Cell: 978 502-0704  
[janet-morrison@comcast.net](mailto:janet-morrison@comcast.net)  
[JHMORRISON.COM](http://JHMORRISON.COM)

Source Credit: MassGIS

**TOWN OF LANCASTER**

 Kilbourn Property  
 Chapter 61A

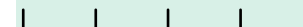
**OPENSOURCE: LANDS**

-  MUNICIPAL
-  LAND TRUST
-  NON-PROFIT



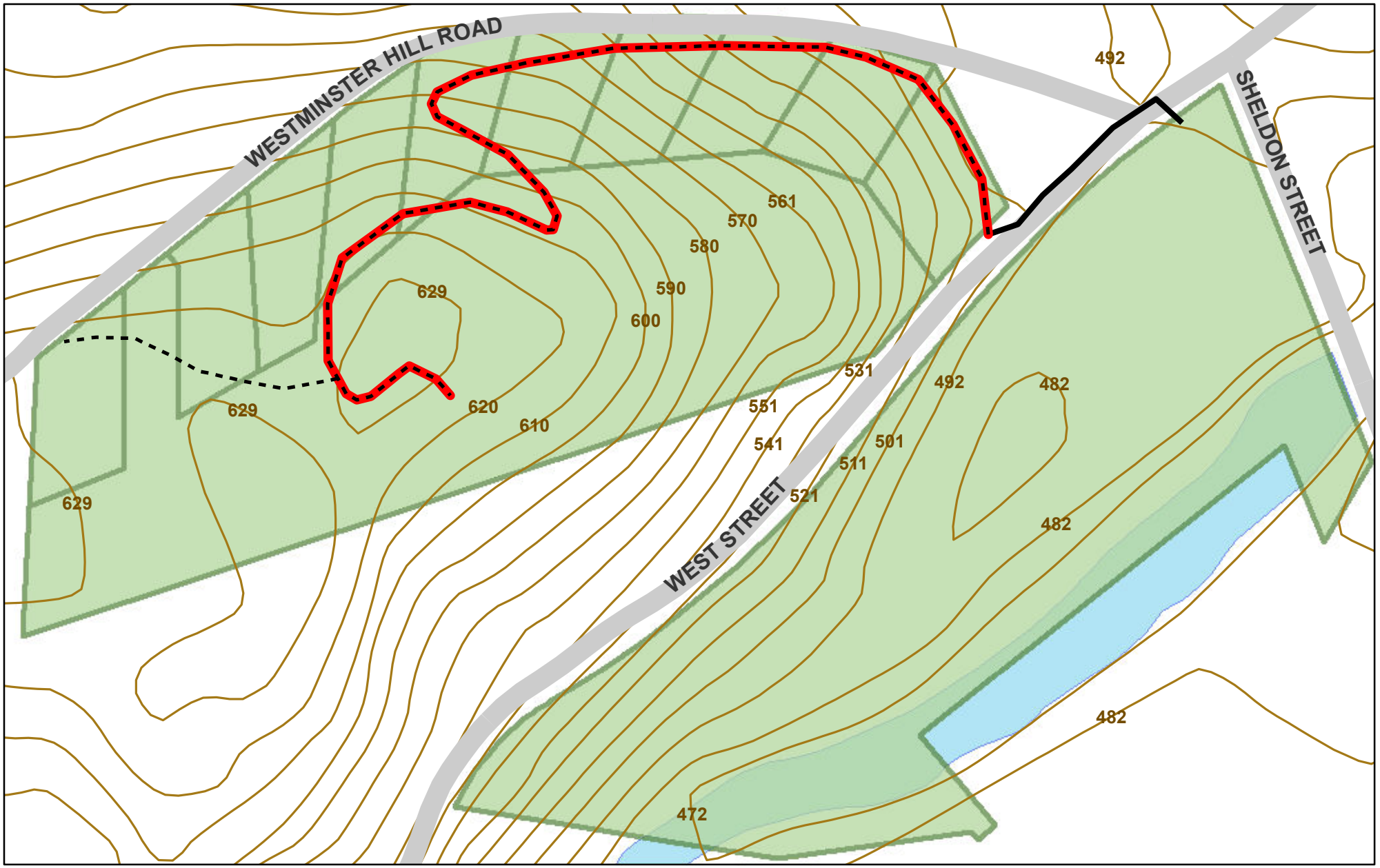
 KILBOURN CR AGRICULTURE LOTS  
 11.9 ACRES

0 0.07 0.15 0.22 0.3 Miles



# Gateway Park Knoll Trail Phase I Proposal

As presented by Desiree Hamelin, Fitchburg Greenway Committee, April 7, 2015



0 300 Feet

- Phase I, Proposed
- Phase II, Conceptual, Accessible
- Topography, 10'
- Phase III, Conceptual, Stairs & Crosswalk

This map was derived from information on MassGIS. The proposed trail location was mapped with a GPS unit at an accuracy level of 21'. This map does not replace a survey.